



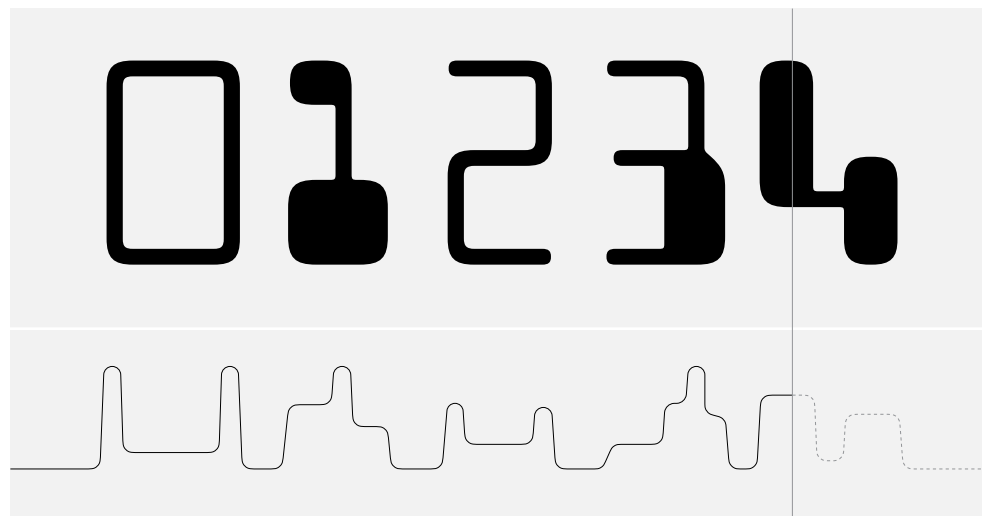
MD POLYCHROME

MD Polychrome is a typeface based on the unique aesthetic of Magnetic Ink Character Recognition (MICR), and the pre-digital typefaces it inspired.

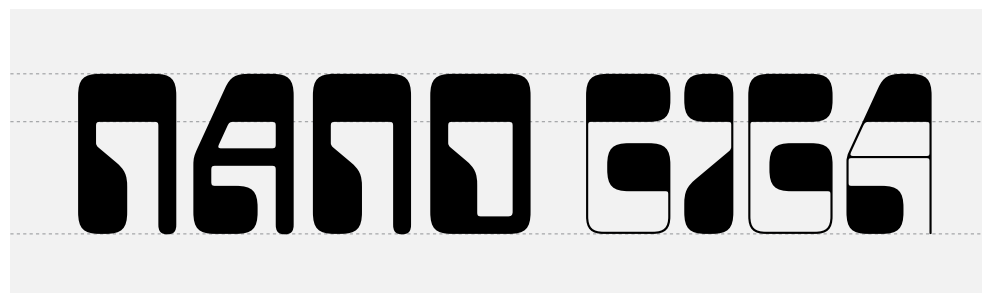
Invented in the late 1950s, MICR allows human-readable characters to also be recognised by a magnetic scanner, on account of each character producing a different magnetic 'signature' when scanned from left to right.

The need for each signature to be unique resulted in a set of glyphs with a bizarre, evocative appearance — and by the mid-1960s, typefaces inspired by the 'MICR look' were becoming increasingly popular.

MD Polychrome both refines and expands on this original MICR aesthetic: balancing its typically uneven texture, improving its spacing, and pushing the limits of optical size to create a version fit for the largest posters and boldest layouts.



△ The glyphs above produce the 'signature' below when scanned with a magnetic reader, which detects the amount of ink in each vertical 'slice' of the image.



△ MD Polychrome's design is expressed through size, rather than weight. At larger optical sizes, the heavy parts of glyphs remain fixed, while thin lines become thinner.



MD Polychrome is available in four discrete styles: **Nano**, **Kilo**, **Mega**, and **Giga**, which correspond to *optical size* rather than weight. The Nano style has bolder strokes, wider glyphs and looser spacing, which helps details hold up at smaller sizes than the Giga style — the hairline strokes of which look best when used very large.

Rather than the finely-tuned optical sizes of a text typeface, the styles of MD Polychrome are (as their names also imply) a guideline rather than a rule. There's no specific point size at which each one must be used — you're encouraged to experiment and find the style and scale that you prefer.

For finer control over the optical size, MD Polychrome is also available on request as a variable font. The variable version is free with all licenses of the complete typeface family.





96pt

Square A, diagonal N

THE PLANET MARS

72pt

201 GHz Resolution Group  
RADIO ASTRONOMY SITE

48pt

Diagonal N

38°20'35.1" N & 109°39'58.3" W  
M74 Phantom Galaxy, Messier Group 3  
Saturn (9.5 AU {1.42 b km} from Sol)

96pt

Chonky Arrows

MS1 Northbound →

72pt

New Query: 88% of \$21.99  
HYPERSPACE WARP DRIVE

48pt

Miami, FL. 1978. Waterfront, night. Neon.  
THE  $n^2$  DIAGRAM OF [DATA INTERFACES]  
“A television, tuned to a dead channel.”



96pt

DIGITAL BANKING APP

72pt

Diagonal N

Exit via the Picture Galleries ↗  
SPACING GUID HEADLINE

48pt

30:55 – Mark Garson's "PLANTASIA" (1976)  
Vertical Hydroponics System {Version 36}  
MAGNETIC INK CHARACTER RECOGNITION



96pt

Synthesizer World Tour

72pt

Interlocking Pairs

TNEWATER VALLEY STADIUM  
Sold Out / 3,270 Capacity Limit

48pt

Diagonal N

"AN OVERWHELMING SURPLUS OF GRAVITAS"  
Jupiter Bessies, £2.99 / 100g, High in Tantalum,  
Rocket Fuel (Deep-Cryo Methanol) Transportes



Uppercase

A B C D E F G H I J K L M N O P Q R S T U V W X Y Z

Lowercase

a b c d e f g h i j k l m n o p q r s t u v w x y z

Proportional Figures

0 1 2 3 4 5 6 7 8 9

Tabular Figures

0 1 2 3 4 5 6 7 8 9

Symbols

° ¢ £ ¥ § ¨ ª « ¬ ® º » ¼ ½ ¾

Mathematics

+ - × ÷ = ≠ > < ~ ^ %

Punctuation

, . : ; ... ! ; ? ; ¸ · ° \* # / \ ( ) { } [ ] - - - \_ " ' ¨ º » « » ( )

Arrows

↑ ↗ → ↘ ↓ ↙ ← ↖ ↔ ↕

Diacritics

¨ ˙ ˘ ˚ ˇ ˆ ˇ ˘ ˚ ˜ ˘ ˜ ˙ ˚ ˜ ˘ ˜ ˙ ˚

Currency

ƒ ₣ ₤ € £ ₪ ₮ ₯ ₰ ₱ ₲ ₳ ₴ ₵ ₶

Superscript & Subscript

0<sup>1</sup> 1<sup>2</sup> 2<sup>3</sup> 3<sup>4</sup> 4<sup>5</sup> 5<sup>6</sup> 6<sup>7</sup> 7<sup>8</sup> 8<sup>9</sup> 9<sup>0</sup>

Precomposed Fractions

½ ⅓ ⅔ ¼ ¾ ⅛ ⅜ ⅝ ⅞

Uppercase Extended

À Á Â Ã Ä Å Æ Ç È É Ê Ë Ì Í Î Ï Ñ Ò Ó Ô Õ Ö × Ø Ù Ú Û Ü Ý Þ ß à á â ã

Lowercase Extended

ä å æ ç è é ê ë ù ú û ü ý þ ÿ ı Ā ā Ȧ ȧ Ȩ ȩ Ȫ ȫ Ȭ ȭ Ȯ ȯ Ȱ ȱ Ȳ ȳ ȴ ȵ ȶ ȷ ȸ ȹ





ss01 Square A	PLANET	PLANET	ss02 Diagonal N	RANGER	RANGER
ss03 Chonky Arrows	Exits →	Exits ➔	ss04 Interlocking Pairs	HEAVEN	HEAVEN
ordn Ordinals	1 <sup>a</sup> 2 <sup>o</sup>	1 <sup>a</sup> 2 <sup>o</sup>	frac Arbitrary Fractions	17/24	17 <sup>⁄</sup> 24
sup <sub>s</sub> Superscript	x <sup>2</sup> +3y	x <sup>2</sup> +3y	sub <sub>s</sub> , sin <sub>f</sub> Subscript, scientific inferiors	H <sub>2</sub> SO <sub>4</sub>	H <sub>2</sub> SO <sub>4</sub>
t <sub>num</sub> Tabular Figures	1.28.49	1.28.49	case & cal <sub>t</sub> Case-Sensitive Forms	i:ñ-ñ➔	i:ñ-ñ➔
loc <sub>l</sub> Localised Forms (Romanian & Moldavian, Catalan, Dutch)	5t 6.6 íj	5t 6.6 íj	cal <sub>t</sub> Contextual Alternates	DANGER ADVANCE 1965-82	DANGER ADVANCE 1965-82



Showing 145 of a total 415 supported languages. You can view the complete list at [mass-driver.com/typeface/md-polychrome](https://mass-driver.com/typeface/md-polychrome).

Afrikaans	Guarani	Makhuwa-Meetto	Sicilian
Akan	Gusii	Makonde	Slovak
Albanian	Hausa	Malagasy	Slovenian
Asu	Hawaiian	Malay	Soga
Azerbaijani	Hungarian	Maltese	Somali
Bafia	Icelandic	Manx	South Ndebele
Bambara	Ido	Māori	Southern Sotho
Basque	Igbo	Meru	Spanish
Bemba	Inari Sami	Meta'	Sundanese
Bena	Indonesian	Mohawk	Swahili
Bosnian	Interlingua	Morisyen	Swati
Breton	Irish	Nigerian Pidgin	Swedish
Catalan	Italian	North Ndebele	Swiss German
Cebuano	Javanese	Northern Sami	Taita
Chiga	Jju	Northern Sotho	Taroko
Cognian	Jola-Fonyi	Norwegian Bokmål	Tasawaq
Cornish	Kabuverdianu	Norwegian Nynorsk	Teso
Corsican	Kalaallisut	Nyanja	Tongan
Croatian	Kalenjin	Nyankole	Tsonga
Czech	Kamba	Occitan	Tswana
Danish	Kikuyu	Oromo	Turkish
Duala	Kinyarwanda	Polish	Turkmen
Dutch	Koyra Chiini	Portuguese	Upper Sorbian
Embu	Koyraboro Senni	Quechua	Uzbek
English	Kurdish	Romanian	Vunjo
Esperanto	Kwasio	Romansh	Walloon
Estonian	Latvian	Rombo	Walser
Faroese	Lingala	Rundi	Welsh
Filipino	Lithuanian	Rwa	Western Frisian
Finnish	Lojban	Samburu	Wolof
French	Low German	Sango	Xhosa
Friulian	Lower Sorbian	Sangu	Yangben
Fula	Luba-Katanga	Sardinian	Zarma
Ga	Luo	Scottish Gaelic	Zulu
Galician	Luxembourgish	Sena	
Ganda	Luyia	Shambala	
German	Machame	Shona	

For languages with multiple scripts or writing systems, only the Latin is supported (unless noted otherwise).

While we take care to ensure our language support is as complete and accurate possible, we can't guarantee that every regional or language-specific variation of a glyph is included. Please [get in touch](#) if you need a custom version to better fit your language.



**Styles / Instances**

Style	opsz <sup>1</sup>	OS/2 width/weight class <sup>2</sup>
Nano	24	5 / 400
Kilo	34	5 / 401
Mega	72	5 / 402
Giga	196	5 / 403

<sup>1</sup> The axis values here correspond to the approximate point sizes for which each style is best suited. This enables some applications, like web browsers, to automatically select the best available optical size.

<sup>2</sup> OS/2 weight class values are sometimes used for sorting fonts in weight order. MD Polychrome's styles are all the same weight, but their weight class values differ to encourage correct sorting.

**MD Polychrome Variable** (Available on request)

Axis	Min	Max
<b>Optical Size</b> (opsz)	24	196

**Formats / Sizes**

Style	Filesize	Contour Type
OTF	152–157 KB	Cubic (CFF)
WOFF2	31–38 KB	Cubic (CFF)
WOFF	36–44 KB	Cubic (CFF)
Variable TTF	133 KB	Quadratic (TTF)
Variable WOFF2	45 KB	Quadratic (TTF)
Variable WOFF	55 KB	Quadratic (TTF)

**General Information**

Credits	Designed by Rutherford Craze.  With thanks to Luke Charsley for guidance throughout the design process, along with everyone who tested early versions of MD Polychrome.
File Version	1.003
First Release	October 2022
Licensing	MD Polychrome may be used only as permitted by the terms of the Mass-Driver End User License Agreement (EULA). <a href="https://mass-driver.com/licensing">https://mass-driver.com/licensing</a>



***mass-driver.com***

© Mass-Driver 2024. All rights reserved.

This specimen is intended for informational purposes only, and is not guaranteed to be free from errors (though we did our best).

Supporting text in this document is set in MD System.