



Mass-Driver
MD Polychrome Specimen

MD POLYCHROME

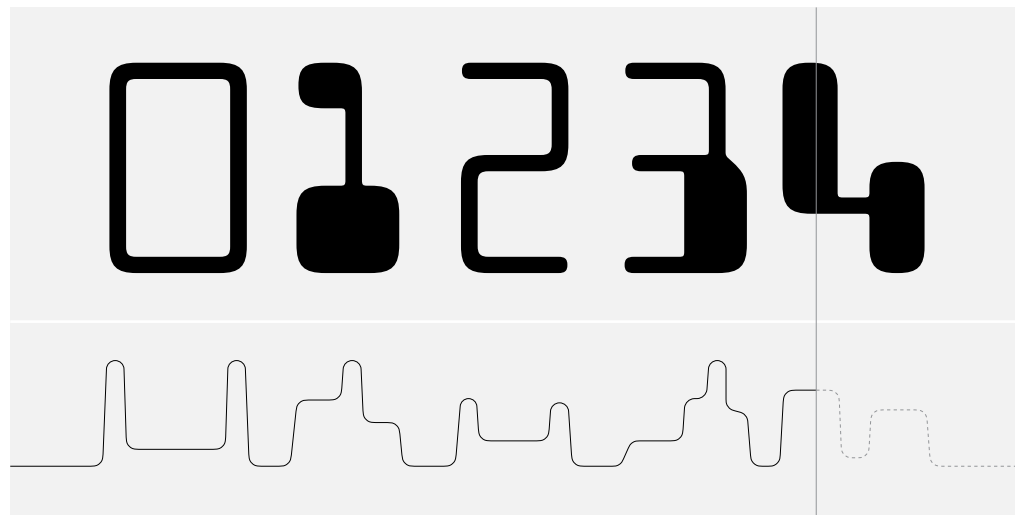


MD Polychrome is a typeface based on the unique aesthetic of Magnetic Ink Character Recognition, and the pre-digital typefaces it inspired.

Invented in the late 1950s, MICR allows human-readable characters to also be recognised by a magnetic scanner, on account of each character producing a different magnetic 'signature' when scanned from left to right.

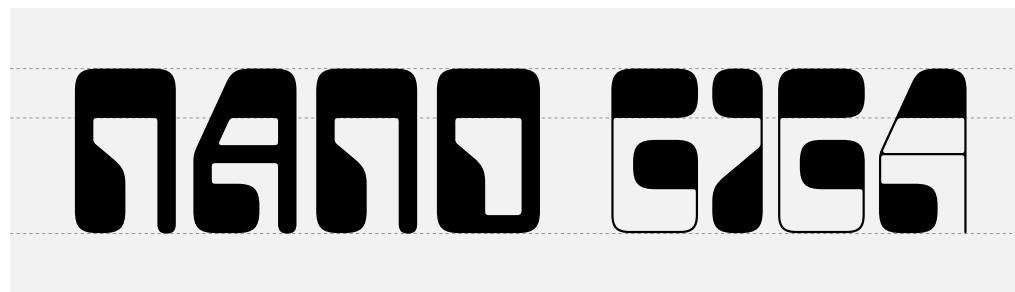
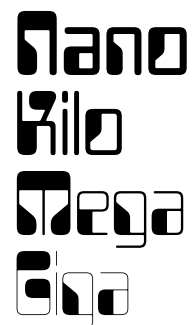
The need for each signature to be unique resulted in a set of uniquely unconventional glyphs. By the mid 1960s, typefaces imitating the 'MICR Look' were increasingly popular.

MD Polychrome both refines and expands on this aesthetic: balancing its typically uneven texture, improving its spacing, and pushing the limits of optical size to create a version fit for the largest posters and boldest layouts.



The glyphs above produce the signature below when scanned with a magnetic reader, which detects the amount of ink in each vertical 'slice' of the image.

MD Polychrome



MD Polychrome's design is expressed through size, rather than weight. At larger optical sizes, the heavy parts of glyphs remain fixed, while thin lines become thinner.



96pt -15%

Square A, Diagonal N

THE PLANET MARS, R

72/72pt -10%

201 GHz Resolution Antennae
RADIO ASTRONOMY SITE 17A

40/48pt -5%

Diagonal N

SITUATED $38^{\circ}20'35.1''$ N & $109^{\circ}39'58.3''$ W IN THE
M74 Phantom Galaxy, Messier Group 3. Located in the
Saturn (9.5 AU {1.42 b km} from Sol); 274 Known



96pt -15%

Chonky Arrows

MS1 Northbound → St

72/72pt -10%

New Query: 88% of \$21.99 = 1
HYPERSPACE WARP DRIVE CONA

40/48pt -5%

Miami, FL. 1978. Waterfront, night. Neon. A car speeds
THE N2 DIAGRAM OF [DATA INTERFACES] CAN BE FOUND
“A television, tuned to a dead channel.” Gibson’s evocat



96pt -15%

DIGITAL BANKING APPLI

72/72pt -10%

Diagonal N

Exit via the Picture Galleries ↗ to N
SPACING GUID "HEADING" 10

40/48pt -5%

30:55 - Mark Garson's "PLANTASIA" (1976) features synth
Vertical Hydroponics System {Version 36} for Agricultural De
MAGNETIC INK CHARACTER RECOGNITION // MKR // SING



96pt -15%

Synthesizer World Tour 19

72/72pt -10%

Interlocking Pairs

TROUWATER VALLEY STADIUM, WE
Sold Out / 3,270 Capacity Limit / A

40/48pt -5%

Diagonal N

"AN OVERWHELMING SURPLUS OF GRAVITAS", NAMED AFTER
Jupiter Berries, £2.99 / 100g, High in Tantalum, Gravitationally Stable
Rocket Fuel (Deep-Cryo Methalox) Cold Transport Vehicle BB-4



ss01 Square A (Stylistic Set 1)

PLANETS PLANETS

ss03 Chonky Arrows (Stylistic Set 3)

Exits → Exits ➔

ordn Ordinals

1^a 2^o 1^ª 2^ºsup_s Superscript $x^2 + 4y^3$ $x^2 + 4y^3$

tnum Tabular Figures

01.28.49 01.28.49

loc1 Localised Forms (Romanian & Moldavian, Catalan, Dutch)

5t 6·6 íj 5t 6·6 íj

ss02 Diagonal N (Stylistic Set 2)

DANGER DANGER

ss04 Interlocking Pairs (Stylistic Set 4)

HEAVEN HEAVEN

frac Arbitrary Fractions

1 17/24 1 ¹⁷/24sub_s Subscript (also sinf Scientific Inferiors)C₆H₁₂O₆ C₆H₁₂O₆

case Case-Sensitive Forms (also calt Contextual Alternates)

i:ñ-ñ→ i:ñ-ñ→

calt Contextual Alternates

DANGER
ADVANCE
1965-82 DANGER
ADVANCE
1965-82



Abkhazian	Filipino	Kuanyama	North Sámi	Tahitian
Acehnese	Finnish	Kumyk	Northern Sotho	Taita
Adangme	Fon	Kurukh	Norwegian Bokmål	Taroko
Adyghe	French	Kwasio	Norwegian Nynorsk	Tasawaq
Afrikaans	Friulian	Ladino	Nyanja	Teso
Akan	Fula	Latin	Nyankole	Tetum
Albanian	Ga	Latvian	Occitan	Timne
Aleut	Galician	Lezghian	Oromo	Tok Pisin
Angika	Ganda	Limburgish	Palauan	Tongan
Aragonese	German	Lingala	Pampanga	Tsonga
Arapaho	Gilbertese	Lithuanian	Pangasinan	Tswana
Aromanian	Gorontalo	Lojban	Papiamento	Tumbuka
Asu	Guarani	Louisiana Creole	Pite Sámi	Turkish
Avaric	Gusii	Lower Sorbian	Polish	Turkmen
Awadhi	Gwich'in	Lozi	Portuguese	Tuvalu
Aymara	Haitian Creole	Luba-Katanga	Quechua	Tuvinian
Azerbaijani	Hausa	Luba-Lulua	Rapanui	Udmurt
Bafia	Hawaiian	Lule Sami	Rarotongan	Umbundu
Balinese	Herero	Lunda	Romanian	Ume Sámi
Bambara	Hiligaynon	Luo	Romansh	Upper Sorbian
Basque	Hungarian	Luxembourgish	Rombo	Uzbek
Bemba	Hupa	Luyia	Rundi	Vai
Bena	Iban	Machame	Rwa	Vunjo
Bini	Ibibio	Madurese	Samburu	Walloon
Bislama	Icelandic	Magahi	Samoan	Waray
Bosnian	Ido	Makasar	Sandawe	Welsh
Breton	Igbo	Makhuwa-Meetto	Sango	Wolastoqey
Buginese	Iloko	Makonde	Sangu	Wolof
Cajun French	Inari Sami	Malagasy	Sardinian	Xhosa
Catalan	Indonesian	Malay	Scots	Yangben
Cebuano	Interlingua	Maltese	Scottish Gaelic	Yemba
Chamorro	Irish	Manx	Sena	Zarma
Cheyenne	Italian	Māori	Serbian	Zaza
Chiga	Javanese	Mari	Shambala	Zulu
ChuuKese	Jju	Marshallese	Shan	Zuni
Colognian	Jola-Fonyi	Mende	Shona	
Comorian	Kabardian	Meru	Sicilian	
Cornish	Kabuverdianu	Meta'	Siksiká	
Corsican	Kachin	Mi'kmaw	Skolt Sami	
Croatian	Kako	Minangkabau	Slovak	
Czech	Kalaallisut	Mirandese	Slovenian	
Dakota	Kalenjin	Mizo	Soga	
Danish	Kalmyk	Mohawk	Somali	
Dargwa	Kamba	Moksha	Soninke	
Dazaga	Kanuri	Morisyen	South Ndebele	
Dogrib	Karachay-Balkar	Mossi	South Sámi	
Duala	Karelian	Mvskoke	Southern Altai	
Dutch	Khasi	Nauru	Southern Sotho	
Efik	Kikuyu	Ndonga	Spanish	
Ekajuk	Kimbundu	Neapolitan	Sranan Tongo	
Embu	Kinyarwanda	Newari	Sukuma	
English	Klingon	Ngambay	Sundanese	
Esperanto	Komi	Nias	Swahili	
Estonian	Koro	Niuean	Swati	
Faroese	Koyra Chiini	Nogai	Swedish	
Fijian	Koyraboro Senni	North Ndebele	Swiss German	

Showing 259 of a total 415 supported languages.

[See our website for a full, searchable list.](#)

For languages with multiple scripts or writing systems, only the Latin is supported (unless noted otherwise).



Credits	Designed by Rutherford Craze.	
	With thanks to Luke Charsley for guidance throughout the design process, along with everyone who tested early versions of MD Polychrome.	
Version No.	1.003	
First Available	October 2022	
Last Updated	October 2022	
Total Styles	4	
Glyphs Per Style	616	
UPM	2000	
Cap Height	1500	
x-Height	1000–1120	
Ascender	1500	
Descender	–300	
Filesize	OTF:	152–157 KB
	WOFF2:	31–38 KB
	TTF (VF):	133 KB
	WOFF2 (VF):	45 KB
Contours	Desktop:	Cubic (CFF)
	Web:	Cubic/Quadratic (CFF/TTF)
	Variable:	Quadratic (TTF) (Unhinted)
Licensing	MD Polychrome may be used only as permitted by the terms of the Mass-Driver License Agreement. https://mass-driver.com/licensing	



Style	OS/2 Weight Class	opsz	Optical Size
Nano	400		24
Kilo	401		34
Mega	402		72
Giga	403		196

MD Polychrome Variable 24 ... 196

Available on request



From human hands.

mass-driver.com

© Mass-Driver 2026. All rights reserved. This specimen is intended for informational purposes only, and is not guaranteed to be free from errors (though we did our best).

Supporting text in this document is set in MD UI.

We don't use AI anywhere in our design or production processes.